

# NWOHIMA SYMPOSIUM CPT 2023 CODE UPDATES

Dianna Foley, BS, RHIA, CCS, CDIP, CHPS  
AHIMA-approved ICD-10-CM/PCS Trainer

# 2023 CPT UPDATES

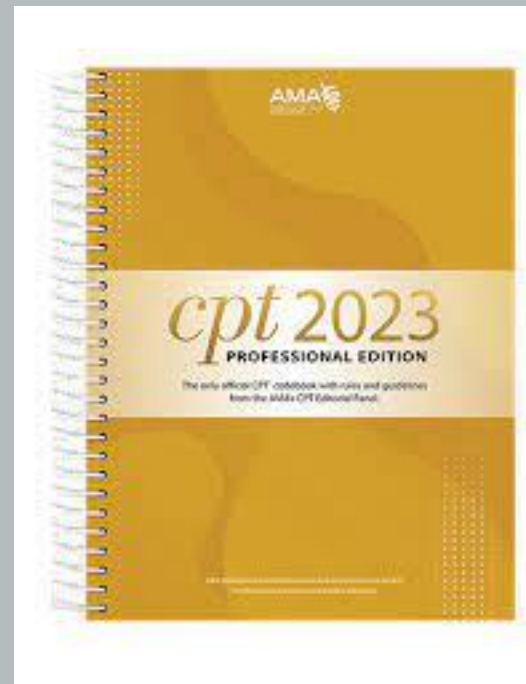
- Objectives
  - Identify the code changes
    - New codes
    - Revised codes
    - Deleted codes
  - Expand understanding of CPT procedures

# 2023 CPT UPDATES

20<sup>23</sup>  
22

# 2023 CPT UPDATES

- January 1, 2023
- 393 code changes



## 2023 CPT UPDATES

- 393 total changes
  - 225 New codes
  - 75 Deletions
  - 93 Revisions

# 2023 CPT UPDATES

## Legend



New code



Revised Code



Contains new or revised text



Telemedicine

# 2023 CPT UPDATES

- Appendix B
  - Summary of Additions, Deletions, and Revisions

# 2023 CPT UPDATES

- **Chargemaster Changes**
  - Radiology codes
    - 1 new
    - 5 revised
  - Laboratory codes
    - 82 new
    - 7 revised
    - 7 deleted



# 2023 CPT UPDATES

- **Chargemaster Changes**
  - **Radiology codes**
    - **76883** Ultrasound, nerve(s) and accompanying structures throughout their entire anatomic course in one extremity, comprehensive, including real-time cine imaging with image documentation, per extremity

# 2023 CPT UPDATES

- **Chargemaster Changes**

- **Radiology codes**

- **76882** Revision is addition of phrase “focal evaluation of”
- **78803, 78830, 78831, & 78832**

Revision is addition of phrase “or acquisition” to these four SPECT codes all related to radiopharmaceutical localization of tumor, inflammatory process, or distribution of radiopharmaceutical agent(s) along with removal of “and pelvis” at 78831 and 78832

## E&M

### Update of select E&M Services

Use of medical decision making/time as determining factor in code selection.

## E&M

Initial Hospital Inpatient or Observation Care (99221-99223)

Subsequent Hospital Inpatient or Observation Care (99231-99233)

Hospital Inpatient or Observation Care (Admission and Discharge Services) (99234-99236)

Hospital Inpatient or Observation Discharge Services (99238-99239)

## E&M

Office or Other Outpatient Consultations (99242-99245)

Inpatient or Observation Consultations (99252-99255)

Emergency Department Services (99281-99285)

Nursing Facility Services (99304-99316)

Home or Residence Services (99341-99350)

## E&M

**+99417**

Prolonged outpatient evaluation and management service(s) time with or without direct patient contact beyond the required time of the primary service when the primary service has been selected using total time, each 15 minutes of total time

## E&M

**+99418**

Prolonged inpatient or observation evaluation and management service(s) time with or without direct patient contact beyond the required time of the primary service when the primary service has been selected using total time, each 15 minutes of total time

## E&M

99446-99451

Code description updated to include performance of service by a consultative physician “or other qualified health care provider”.



## E&M

99483

Cognitive assessment and care code revised to 60 minutes of total time spent on the date of the encounter.

## INTEGUMENTARY

**15778**

Implantation of absorbable mesh or other prosthesis for delayed closure of defect(s)(ie, external genitalia, perineum, abdominal wall) due to soft tissue infection or trauma

# INTEGUMENTARY



15050

Removal of sutures under anesthesia  
(other than local), same surgeon

## INTEGUMENTARY

**1585 I**

Removal of suture **or** staples requiring anesthesia (ie, general anesthesia, moderate sedation)

## INTEGUMENTARY

+ 15853

Removal of sutures **or** staples  
not requiring anesthesia

+ 15854

Removal of suture **and** staples  
not requiring anesthesia

## MUSCULOSKELETAL

22857

Total disc arthroplasty (artificial disc), anterior approach, including discectomy to prepare interspace (other than for decompression); single interspace, lumbar

+22860

second interspace, lumbar

# MUSCULOSKELETAL



## MUSCULOSKELETAL

27280

Arthrodesis, sacroiliac joint, open,  
includes obtaining bone graft, including  
instrumentation, when performed



# RESPIRATORY



## RESPIRATORY

30469

Repair of nasal valve collapse with low energy temperature-controlled (ie, radiofrequency)  
subcutaneous/submucosal remodeling

## CARDIOVASCULAR

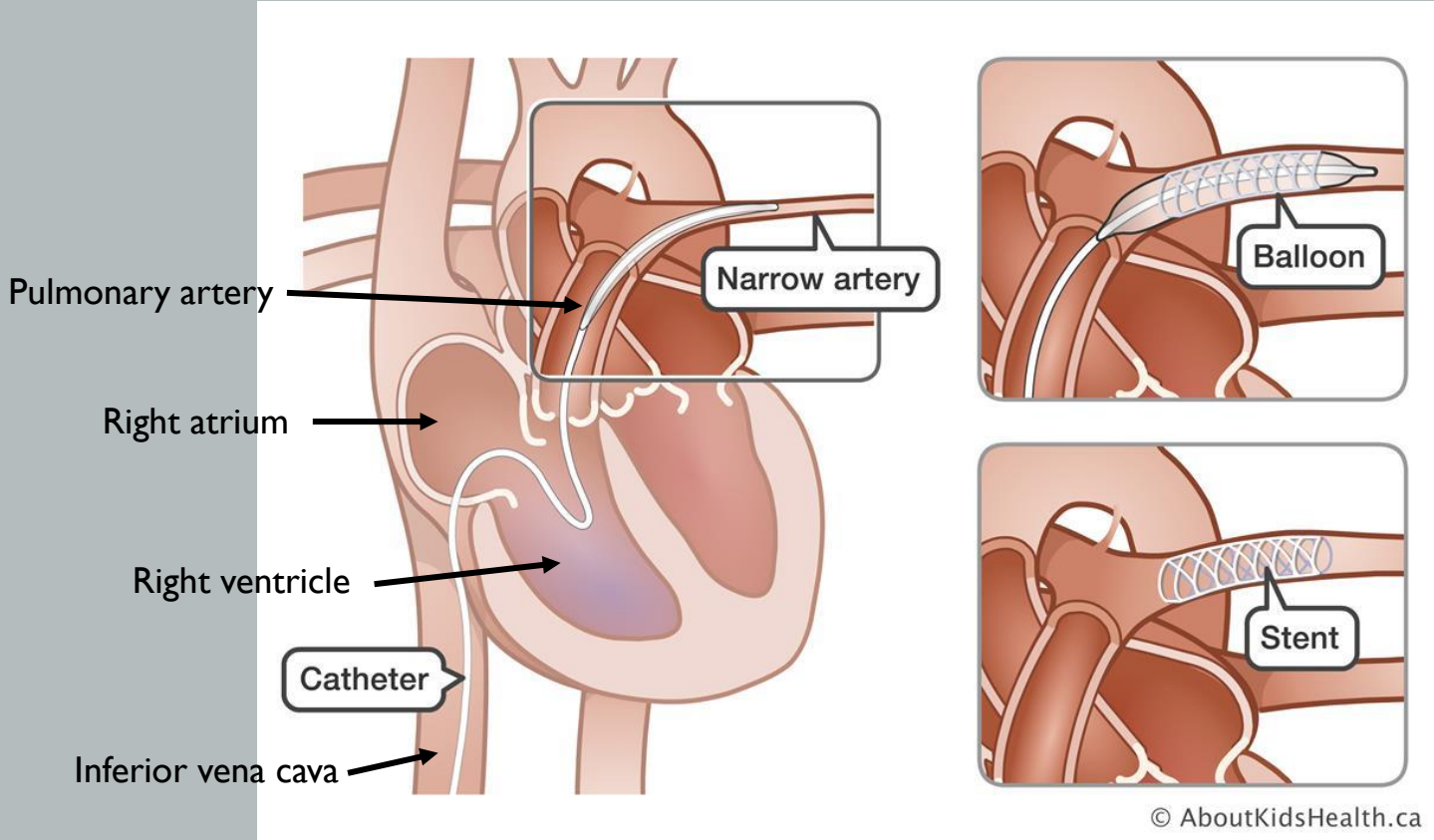
New series of codes for pulmonary artery  
revascularization 33900-33904

Describe stent placement for repair of pulmonary  
artery stenosis

## CARDIOVASCULAR

- 33900** Percutaneous pulmonary artery revascularization by stent placement, initial; normal native connections, unilateral
- 33901** normal native connections, bilateral

# CARDIOVASCULAR



## CARDIOVASCULAR

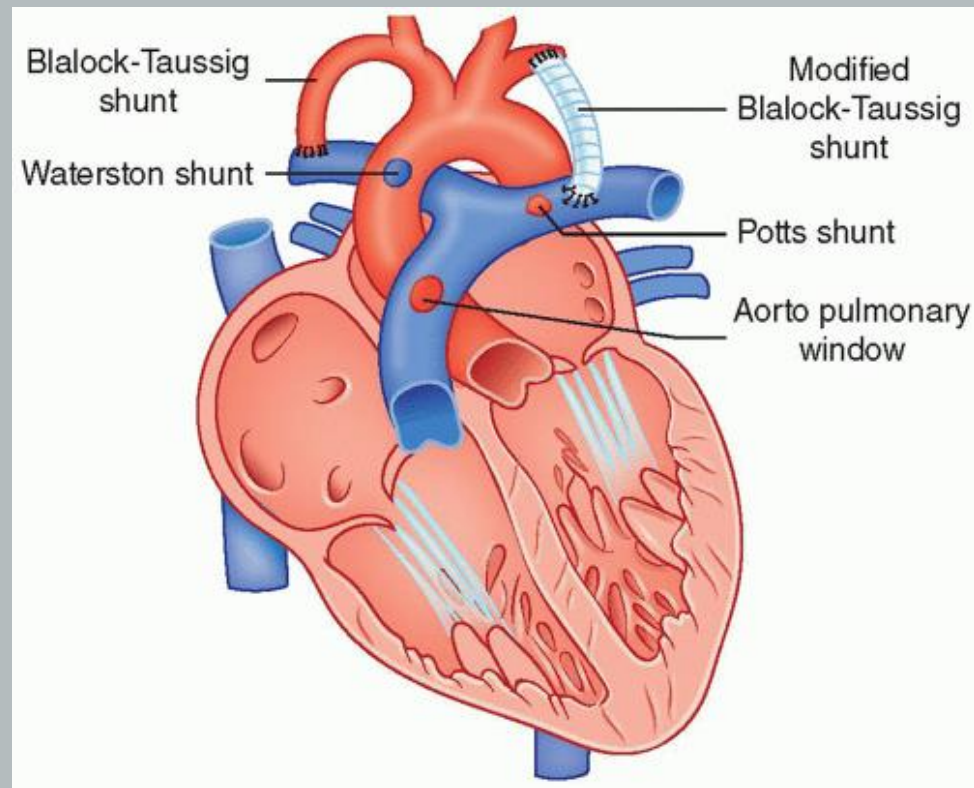
**33902**

abnormal connections, unilateral

**33903**

abnormal connections, bilateral

# CARDIOVASCULAR



## CARDIOVASCULAR

- +33904 Percutaneous pulmonary artery revascularization by stent placement, each additional vessel or separate lesion, normal or abnormal connections



## CARDIOVASCULAR

**35883**

Revision, femoral anastomosis of synthetic arterial bypass graft in groin, open; with nonautogenous patch graft (eg, polyester, ePTFE, bovine pericardium)

## CARDIOVASCULAR

**36836**

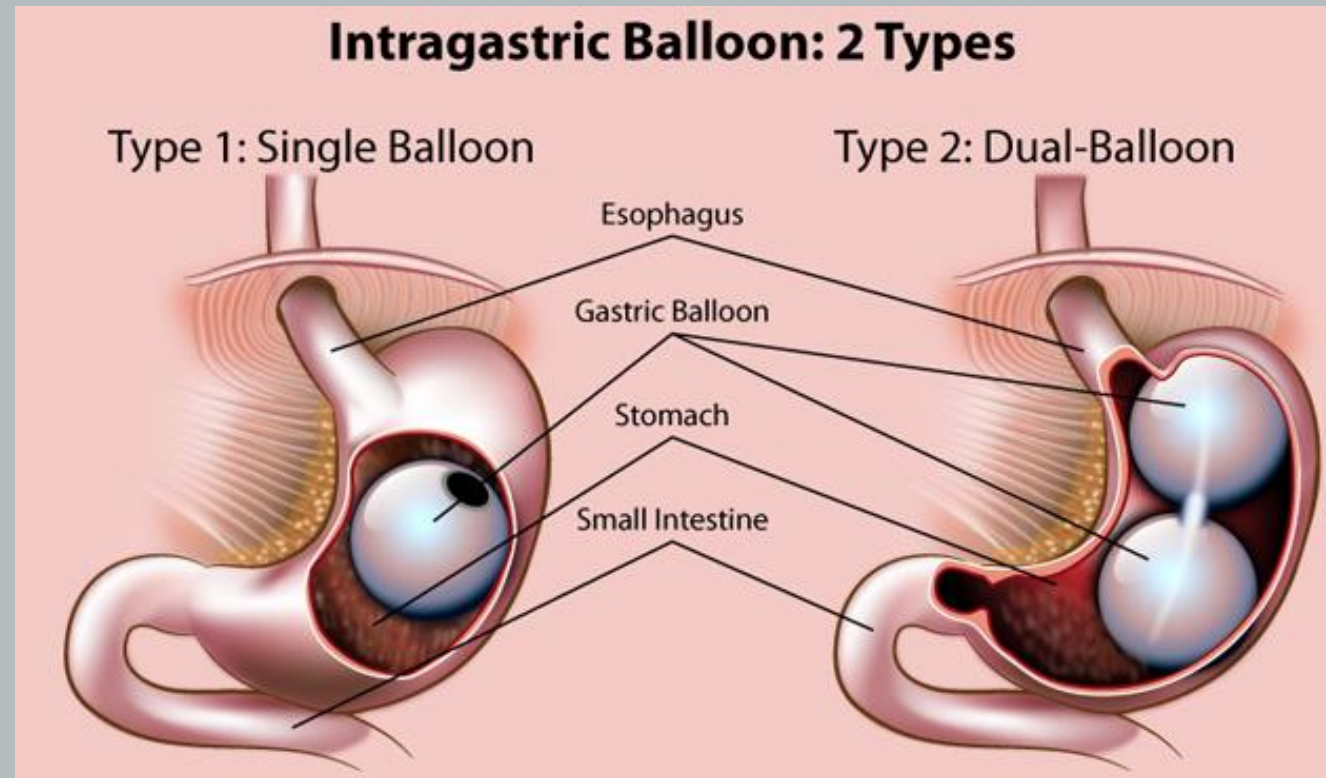
Percutaneous arteriovenous fistula creation, upper extremity, single access of both the peripheral artery and peripheral vein, including fistula maturation procedures (eg, transmural balloon angioplasty, coil embolization) when performed, including all vascular access, imaging guidance, and radiologic supervision and interpretation

## CARDIOVASCULAR

**36837**

Percutaneous arteriovenous fistula creation, upper extremity, separate access sites of the peripheral artery and peripheral vein, including fistula maturation procedures (eg, transmural balloon angioplasty, coil embolization) when performed, including all vascular access, imaging guidance, and radiologic supervision and interpretation

# DIGESTIVE



## DIGESTIVE

- 43290** Esophagogastroduodenoscopy, flexible, transoral; with deployment of intragastric bariatric balloon
- 43291** with removal of intragastric bariatric balloon(s)

## DIGESTIVE

Changes for hernia repairs

Deletion of codes 49560-49590

(Incisional, ventral, epigastric, umbilical, & spigelian) open

Deletion of codes 49652-49657

(Incisional, ventral, epigastric, umbilical, & spigelian) laparoscopic

## DIGESTIVE

Epigastric, incisional, ventral, umbilical, and spigelian are now all categorized as anterior abdominal hernias (49591 - 49518).

Code assignment will be based on:

- Total defect size

- Reducible or incarcerated/strangulated

- Initial or recurrent

## DIGESTIVE

Measuring for multiple separate defects:

Use the superior most aspect of upper defect to the inferior aspect of the lowest defect.

This is the maximal craniocaudal or transverse distance between the outer margins of all defects repaired.



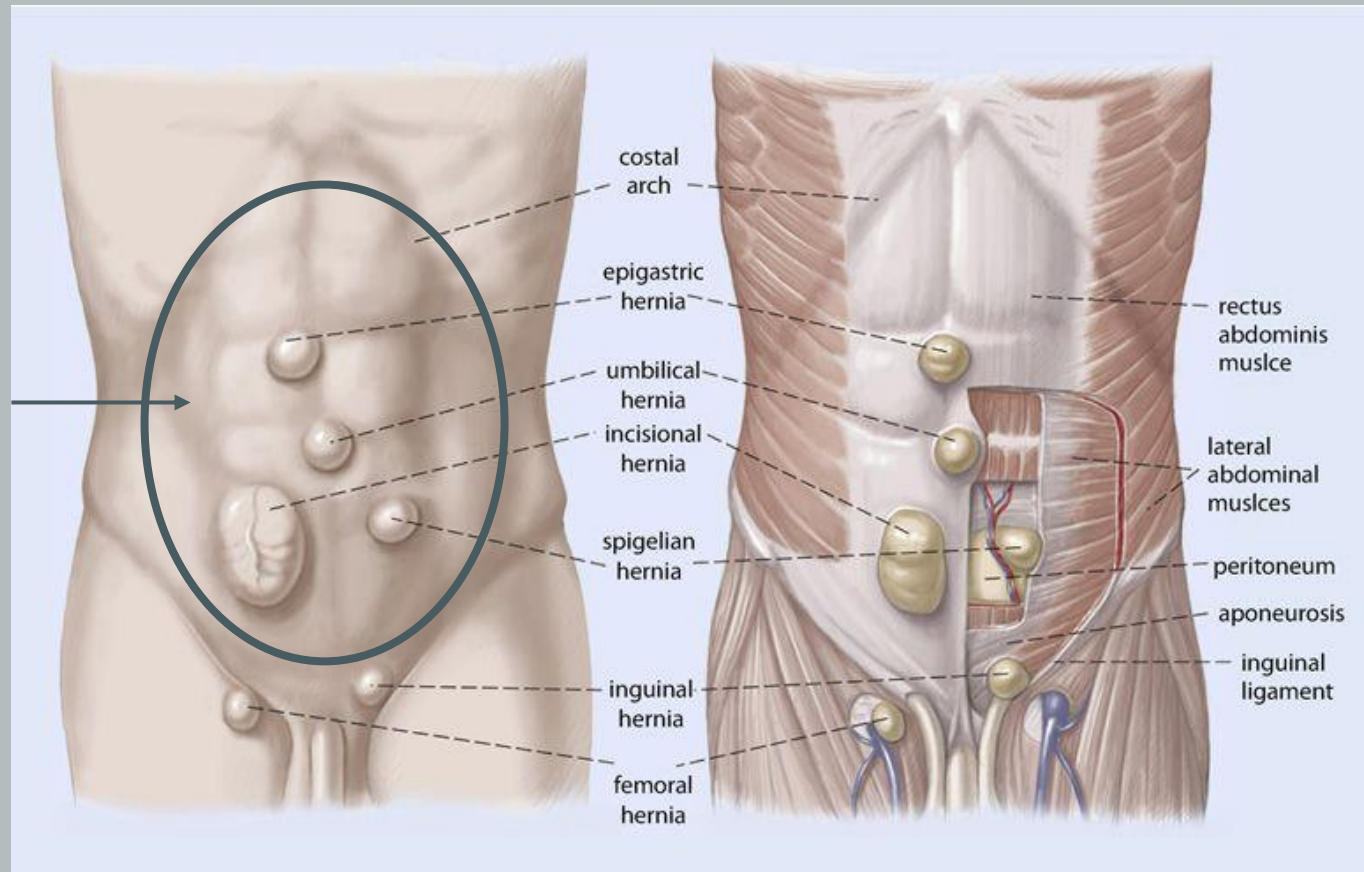
## DIGESTIVE

How will you code a repair that includes both reducible and incarcerated/strangulated anterior abdominal hernias at the same operative session?

Report all as incarcerated/strangulated.

# DIGESTIVE

Anterior  
Abdominal  
Hernias



## DIGESTIVE

**4959 I** Repair of anterior abdominal hernia(s) (ie, epigastric, incisional, ventral, umbilical, spigelian), any approach (ie, open, laparoscopic, robotic), initial, including implantation of mesh or other prosthesis when performed, total length of defect(s); less than 3 cm, reducible

## DIGESTIVE

49592

less than 3 cm, incarcerated or  
strangulated

49593

3 cm to 10 cm, reducible

49594

3 cm to 10 cm, incarcerated or  
strangulated

49595

greater than 10 cm, reducible

49596

greater than 10 cm, incarcerated or  
strangulated

## DIGESTIVE

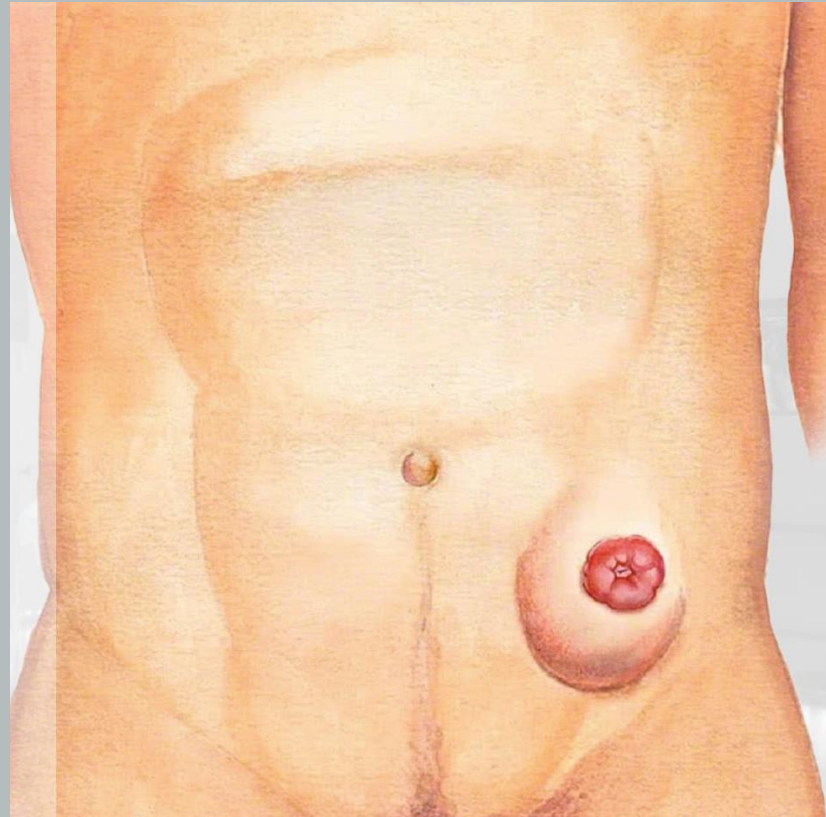
**49613**

Repair of anterior abdominal hernia(s) (ie, epigastric, incisional, ventral, umbilical, spigelian), any approach (ie, open, laparoscopic, robotic), recurrent, including implantation of mesh or other prosthesis when performed, total length of defect(s); less than 3 cm, reducible

## DIGESTIVE

- 49614 less than 3 cm, incarcerated or strangulated
- 49615 3 cm to 10 cm, reducible
- 49616 3 cm to 10 cm, incarcerated or strangulated
- 49617 greater than 10 cm, reducible
- 49618 greater than 10 cm, incarcerated or strangulated

# DIGESTIVE



## DIGESTIVE

- 49621** Repair of parastomal hernia, any approach (ie, open, laparoscopic, robotic), initial or recurrent, including implantation of mesh or other prosthesis, when performed; reducible
- 49622** incarcerated or strangulated



## DIGESTIVE

+49623

Removal of total or near total non-infected mesh or other prosthesis at the time of initial or recurrent anterior abdominal hernia repair or parastomal hernia repair, any approach (ie, open, laparoscopic, robotic)

## URINARY

50080

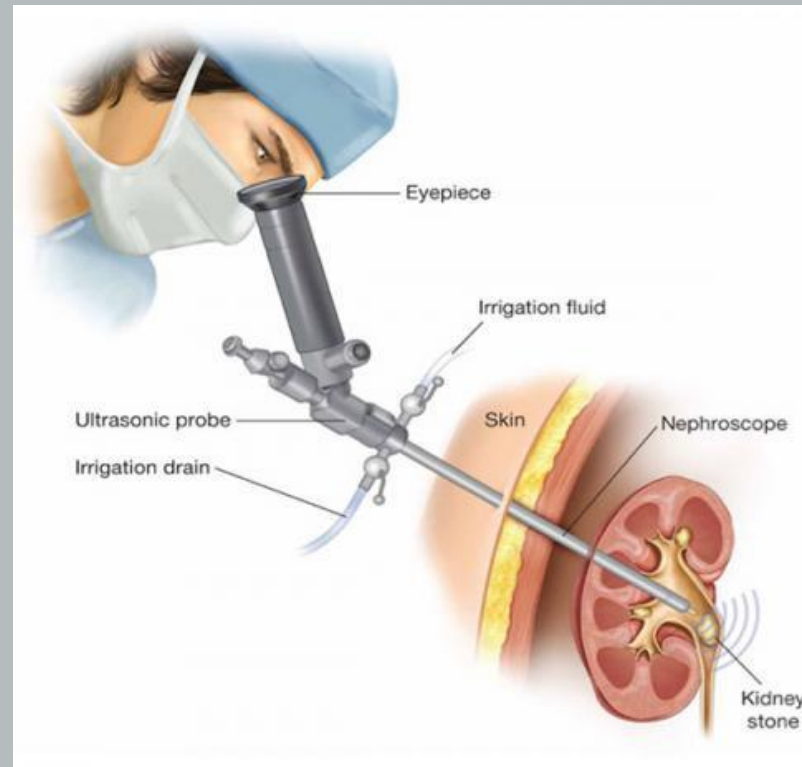
Percutaneous nephrolithotomy or pyelolithotomy, lithotripsy, stone extraction, antegrade ureteroscopy, antegrade stent placement and nephrostomy tube placement, when performed, including imaging guidance, simple (eg, stone(s) up to 2 cm in single location of kidney or pelvis, nonbranching stones)

## URINARY

50081

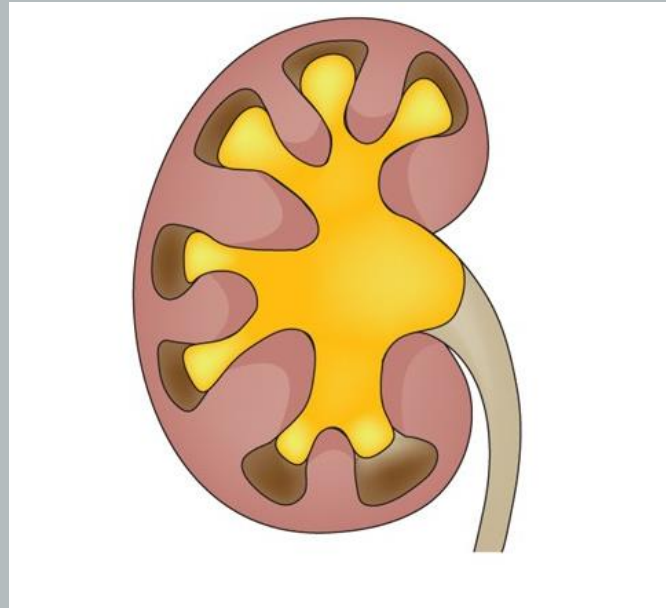
complex (eg, stone(s)  $> 2$  cm, branching stones, stones in multiple locations, ureter stones, complicated anatomy)

# URINARY



# URINARY

## Staghorn Calculus



## MALE GENITAL

**55867**

Laparoscopy, surgical prostatectomy, simple subtotal (including control of postoperative bleeding, vasectomy, meatotomy, urethral calibration and/or dilation, and internal urethrotomy), includes robotic assistance, when performed

## NERVOUS

- 64415 Injection(s), anesthetic agent(s) and/or steroid; brachial plexus, including imaging guidance, when performed
- 64416 brachial plexus, continuous infusion by catheter (including catheter placement), including imaging guidance, when performed
- 64417 axillary nerve, including imaging guidance, when performed

## NERVOUS

64445

sciatic nerve, including imaging guidance, when performed

64446

sciatic nerve, continuous infusion by catheter (including catheter placement), including imaging guidance, when performed



## NERVOUS

64447

femoral nerve, including imaging guidance, when performed

64448

femoral nerve, continuous infusion by catheter (including catheter placement), including imaging guidance, when performed

## EYE & OCULAR ADNEXA

- 66174** Transluminal dilation of aqueous outflow canal (eg, canaloplasty); without retention of device or stent
- 66175** with retention of device or stent

# AUDITORY

## Osseointegrated Implants

Codes have been revised or added to address implantation, replacement, or removal within the mastoid or a bony defect (distinguished by size)

## AUDITORY

69716

Implantation, osseointegrated implant, skull; with magnetic transcutaneous attachment to external speech processor, within the mastoid and/or resulting in removal of less than 100 sq mm surface area of bone deep to the outer cranial cortex

## AUDITORY

69729

with magnetic transcutaneous attachment to external speech processor, outside of the mastoid and resulting in removal of greater than or equal to 100 sq mm surface area of bone deep to the outer cranial cortex

## AUDITORY

- 69717** Replacement (including removal of existing device), osseointegrated implant, skull; with percutaneous attachment to external speech processor

## AUDITORY

69719

with magnetic transcutaneous attachment to external speech processor, within the mastoid and/or involving a bony defect less than 100 sq mm surface area of bone deep to the outer cranial cortex

## AUDITORY

69730

with magnetic transcutaneous attachment to external speech processor, outside of the mastoid and resulting in removal of greater than or equal to 100 sq mm surface area of bone deep to the outer cranial cortex



## AUDITORY

69726

Removal, entire osseointegrated implant, skull; with percutaneous attachment to external speech processor

## AUDITORY

69727

with magnetic transcutaneous attachment to external speech processor, within the mastoid and/or involving a bony defect less than 100 sq mm surface area of bone deep to the outer cranial cortex

## AUDITORY

69728

with magnetic transcutaneous attachment to external speech processor, outside of the mastoid and resulting in removal of greater than or equal to 100 sq mm surface area of bone deep to the outer cranial cortex

## VACCINES/TOXOIDS

- New codes for COVID-19 immunization administration and vaccines

## VACCINES/TOXOIDS

**90584**

Dengue vaccine, quadrivalent, live, 2 dose schedule, for subcutaneous use

**90678**

Respiratory syncytial virus vaccine, pref, subunit, bivalent, for intramuscular use

## OPHTHALMOLOGY

92065

Orthoptic training; performed by a physician or other qualified health care professional

92066

under supervision of a physician or other qualified health care professional

## CARDIOVASCULAR

+93568

Injection procedure during cardiac catheterization including imaging supervision, interpretation, and report; for nonselective pulmonary arterial angiography

+93569

for selective pulmonary arterial angiography, unilateral

+93573

for selective pulmonary arterial angiography, bilateral

## CARDIOVASCULAR

+93574

for selective pulmonary venous angiography of each distinct pulmonary vein during cardiac catheterization

+93575

for selective pulmonary angiography of major aortopulmonary collateral arteries (MAPCAs) arising off the aorta or its systemic branches, during cardiac catheterization for congenital heart defects, each distinct vessel



## BEHAVIOR MANAGEMENT SERVICES

**96202**

Multiple family group behavior management/modification training for parent(s)/guardian(s)/caregiver(s) of patients with a mental or physical health diagnosis, administered by physician or other qualified health care professional (without the patient present), face-to-face with multiple sets of parent(s)/guardian(s)/caregiver(s); initial 60 minutes

**+96203**

each additional 15 minutes

## REMOTE THERAPEUTIC MONITORING SERVICES

98975

Remote therapeutic monitoring (eg. therapy adherence, therapy response); initial set-up and patient education on use of equipment

98976

device(s) supply with scheduled (eg, daily) recording(s) and/or programmed alert(s) transmission to monitor respiratory system, each 30 days

## REMOTE THERAPEUTIC MONITORING SERVICES

98977

device(s) supply with scheduled (eg, daily) recording(s) and/or programmed alert(s) transmission to monitor musculoskeletal system, each 30 days

98978

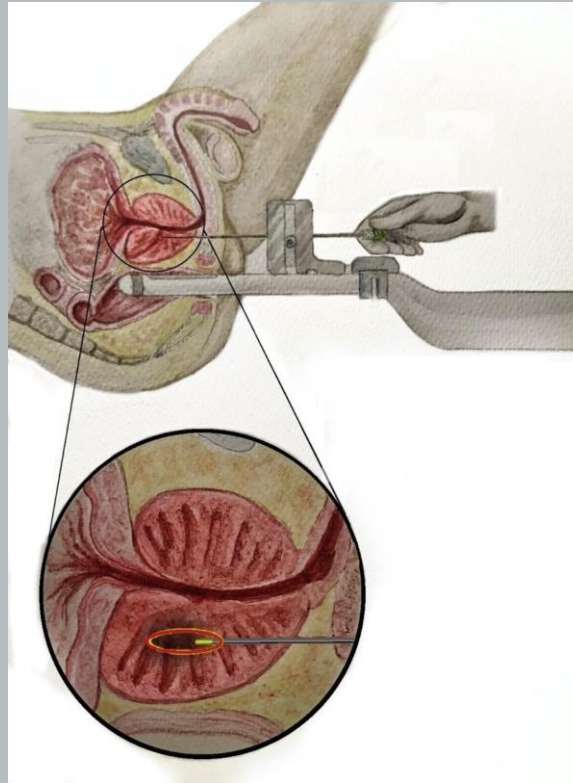
device(s) supply with scheduled (eg, daily) recording(s) and/or programmed alert(s) transmission to monitor cognitive behavioral therapy, each 30 days

## CATEGORY III CODES

**0714T**

Transperineal laser ablation of benign prostatic hyperplasia, including imaging guidance

# CATEGORY III CODES

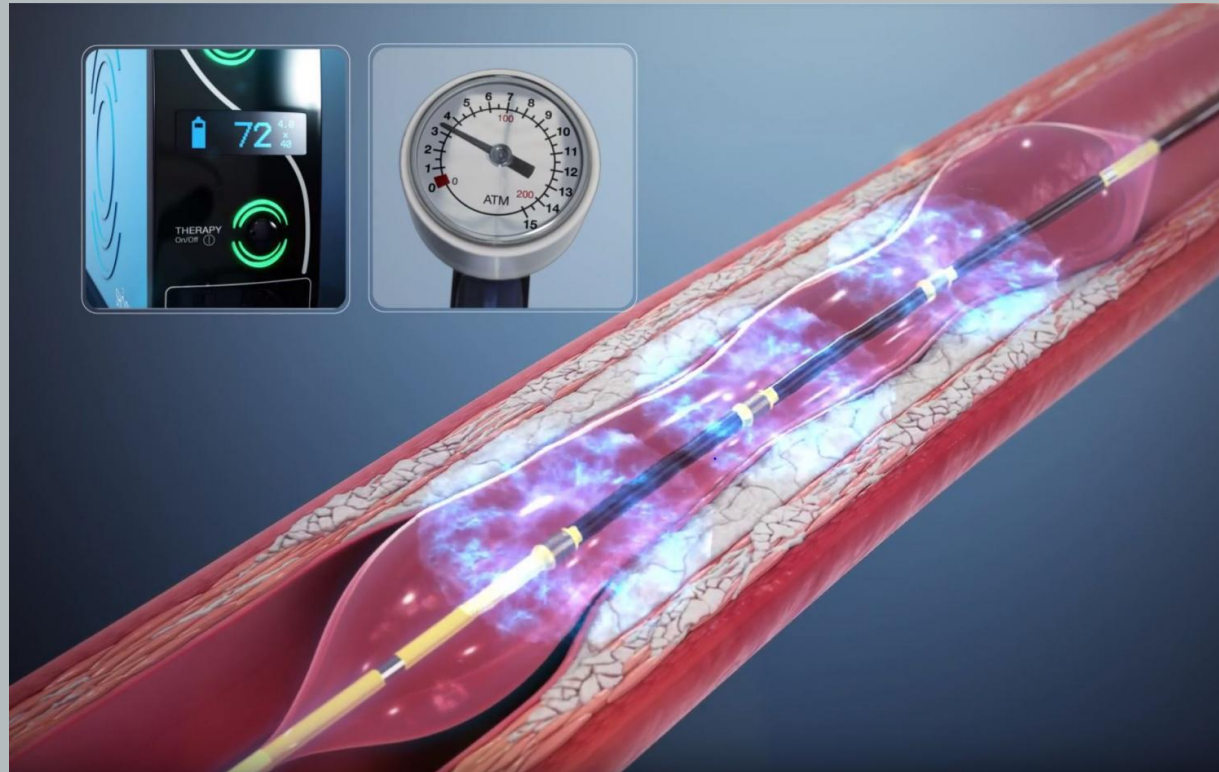


## CATEGORY III CODES

**+0715T**

Percutaneous transluminal  
coronary lithotripsy

# CATEGORY III CODES

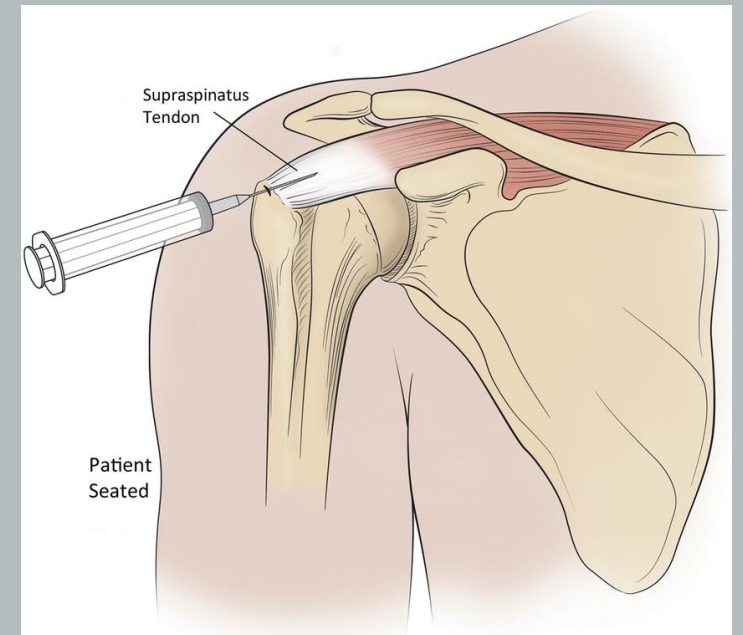


Source: <https://uihc.org/news/ui-heart-and-vascular-team-performs-first-coronary-lithotripsy-procedure-iowa>

## CATEGORY III CODES

0718T

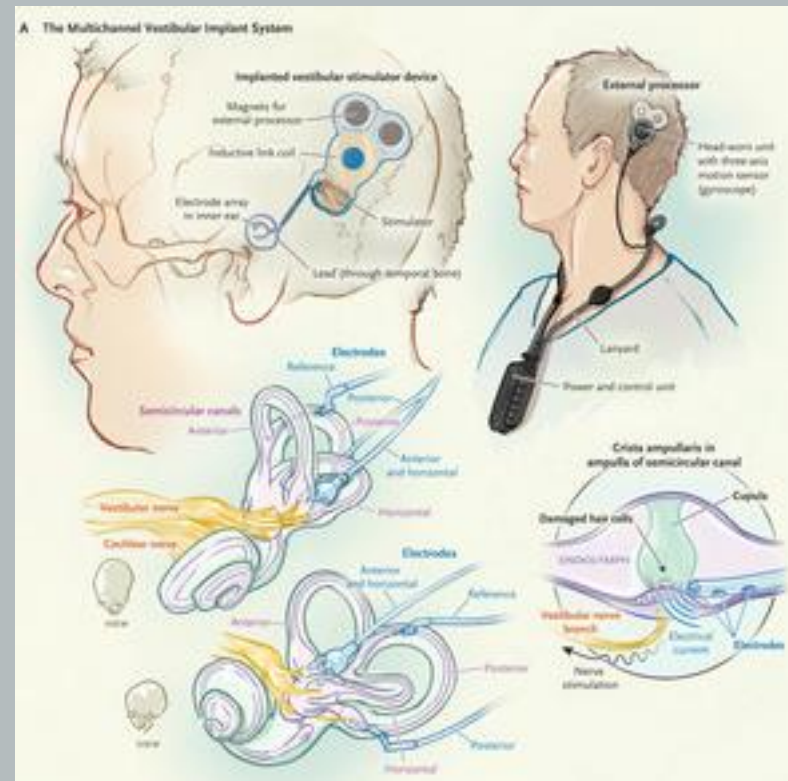
Injection into supraspinatus tendon including ultrasound guidance, unilateral



[https://www.researchgate.net/figure/First-injection-was-made-into-the-supraspinatus-tendon-insertion-critical-zone-and-bursal\\_fig1\\_351978309](https://www.researchgate.net/figure/First-injection-was-made-into-the-supraspinatus-tendon-insertion-critical-zone-and-bursal_fig1_351978309)



# CATEGORY III CODES



## CATEGORY III CODES

- 0725T** Vestibular device implantation, unilateral
- 0726T** Removal of implanted vestibular device, unilateral
- 0727T** Removal and replacement of implanted vestibular device, unilateral

## CATEGORY III CODES

- 0728T** Diagnostic analysis of vestibular implant, unilateral, with initial programming
- 0729T** with subsequent programming

## CATEGORY III CODES

Virtual reality

**+0770T** Virtual reality technology to assist  
therapy

## CATEGORY III CODES

Virtual Reality Patient Procedural Dissociation  
Altered consciousness which is VR based.

Facilitates:

Patient comfort

Procedural tolerance

Decreases pain

## CATEGORY III CODES

**0771T-0774T**

VR codes based on:

Same provider as performing diagnostic or therapeutic service or not

Initial 15 minutes of service or each additional 15 minutes of service

## CATEGORY III CODES

**0775T** Arthrodesis, sacroiliac joint,  
percutaneous, with image guidance,  
includes placement of intra-articular  
implant(s)(eg, bone allograft(s),  
synthetic device(s))

*Thank You*



QUESTIONS?

## Contact Information

Dianna Foley, RHIA, CCS, CDIP, CHPS

AHIMA Approved ICD-10-Trainer

[dfoley55@gmail.com](mailto:dfoley55@gmail.com)

# RESOURCES

- *Current Procedural Terminology (CPT®) Fourth Edition, Chicago, IL American Medical Association, 2023.*